



SANQUIP

WATERLESS | DURABLE | BESPOKE

GRP SANITARY WARE

ESTABLISHED 1964

AT THE FOREFRONT OF GRP SANITARY WARE IN THE UK

For over 50 years EMJ Plastics has led the way with GRP sanitary ware products with its 'Sanquip' range. Sanquip products are widely recognised by professional bodies, councils and sports arenas due to their durability and high-quality finish.

Sanquip is a recognised supplier to premiership football clubs and supplied the London 2012 Olympic Stadium.

Some of our projects:



SANQUIP





DESIGNED AND PRODUCED IN GREAT BRITAIN

Our Sanquip range of products are designed and manufactured in house by highly skilled craftsman.

All products are hand made and finished with a smooth gloss gel-coat in a colour of your choice. Highly resistant to staining and to acid/alkali concentrations under normal use.

Lightweight, ready plumbed and extremely durable, allows for speedy installation and low maintenance throughout its long serving lifespan.

Sanquip is available as a standard range plumbed or waterless, or indeed designed and manufactured to a customers individual requirements.

For more information please visit www.sanquip.com or contact one of our sales advisors on 01723 512224 or email at sales@emjplastics.com

- Lightweight
- Durable
- Smooth gloss exterior
- Easy clean
- Low maintenance
- Waterless option

- Quick installation
- Any colour
- Range of sizes
- Bespoke designer service
- Excellent customer service
- ISO9001 quality accredited

“ EMJ Plastics provided waterless Sanquip urinals to our new stand. The product is simple to fit, robust and requires very little maintenance. The waterless option is not only providing us with large savings, but is helping the environment. ”

“ EMJ provided curved Sanquip 3-stall urinals to suit the internal curved walls we installed up to. We were very happy with the product and service. ”

SANQUIP

SUSTAINABLE TECHNOLOGY REDUCES COSTS AND PROVIDES IMPROVED EFFICIENCY

The Sanquip cartridge is used in all waterless urinals we supply, this enables them to operate effectively without regular flushing. The cartridge fights odours and blockages by dispensing bacterial spores into the urinal trap. every time the urinal is used, these spores then become non pathogenic live bacteria which then break down the urine keeping the urinal clean.

We also provide Sanquip cartridges with our plumbed urinals as its proven to prevent odours and blockages in flushing systems.

Waterless systems can save the customer £1,000s each year and help protect the environment. Speak to our advisors for more information.

Sanitises & freshens

Prevent foul odours, protects the environment and improves washroom experience for all staff and customers.

The 'Sanquip' cartridge

Incorporates 35 BILLION bacteria, releasing 3-500,000 bacteria every day, whilst installed. Bacteria multiply every 15-20 minutes, building vast colonies within the waste pipe work. Destroying uric salts and lime scale.

The process

As urine passes through and round the cartridge, a small amount of bio is eroded into the solution. This activates the enzyme and results in a eco-friendly bacterium which eliminates the need for strong chemicals and cleaning agents. It also emits a powerful minty type fragrance which reduces the need for harmful aerosols and air fresheners.

Maintenance

The cartridge only needs replacing every 13 weeks and the patented hydraulic odour lock system traps any odours within the immediate pipework meaning that they can in no way enter the surrounding washroom environment.





WALL URINALS

Sanquip GRP Urinals are lightweight and extremely durable. They are widely used throughout the UK and abroad in pubs, clubs, schools and major sport stadia. The Ascot Range is our most popular product suited to high footfall environments.

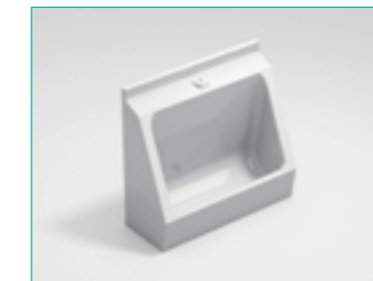
The units are designed to be wall mounted to any surface aided by its lightweight nature.

Also the durability the product provides make it very popular with Stadiums, Pubs, Schools, Train Stations and is highly sought after in the modular building industry.

The units are supplied in a choice of lengths, in one piece, ready plumbed for easy installation. We can provide products to suit exposed or concealed plumbing.

Units are available in a wide range of colours from the RAL Colour System. Please confirm availability with EMJ.

Ascot Range



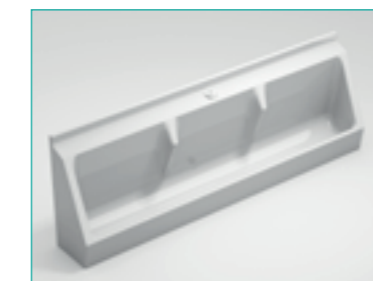
Single stall

Width:	600mm
Depth:	284mm
Height:	655mm
Weight:	6.7kgs



Two stall

Width:	1200mm
Depth:	284mm
Height:	655mm
Weight:	13.4kgs



Three stall / Four stall

Width:	1800mm / 2400mm
Depth:	284mm
Height:	655mm
Weight:	20.1kgs / 26.8kgs

FLOOR URINALS

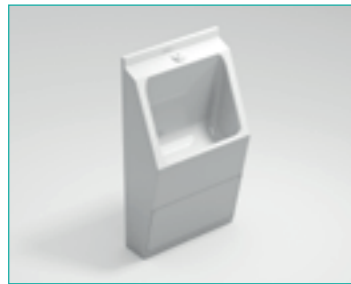
Sanquip GRP Floor Urinals are lightweight and extremely durable. They are widely used throughout the UK and overseas in pubs, clubs, schools and major sports stadia

Floor standing units are supplied as plumbed or waterless models utilising a cartridge system.

End panels are incorporated within the urinal moulding. Therefore units can be used as stand alone urinals or they can be used end-to-end to form any combination of standard length models.

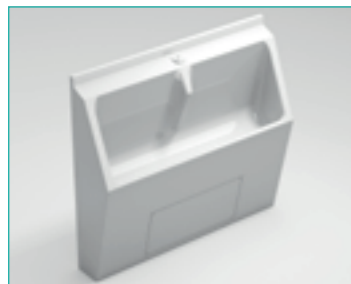
Units are available in a wide range of colours from the RAL Colour System. Please confirm availability with EMJ.

Cheltenham Range



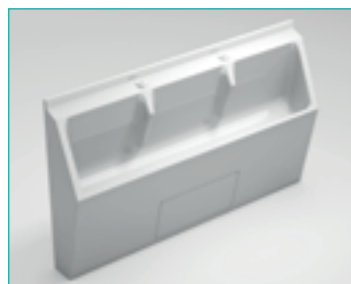
One stall

Width:	600mm
Depth:	284mm
Height:	1092mm
Weight:	9.1kgs



Two stall

Width:	1200mm
Depth:	284mm
Height:	1092mm
Weight:	17.3kgs



Three stall / Four stall

Width:	1800mm / 2400mm
Depth:	284mm
Height:	1092mm
Weight:	26.4kgs / 34.3kgs





WASH TROUGHS

Sanquip GRP Wash Troughs are lightweight and extremely durable. They are widely used throughout the UK and overseas, in pubs, clubs, schools and major sport stadia.

Wash troughs are supplied in a choice of lengths, in one piece for easy installation.

Standard units are white smooth gloss gel surface finish, resistant to staining and to acid and alkali concentrations under normal use. The smooth round curves of the product enable ease of cleaning and the materials used in the products allow for cleaning without the use of harsh chemicals.

Units are available in a wide range of colours from the RAL Colour System. Please confirm availability with EMJ.

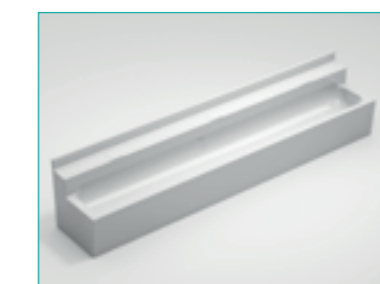
Wash trough standard accessories available (fitted by EMJ or by the client) steel fixing brackets and white plastic coned waste outlet.

Beverley Range



Two person

Width:	1400mm
Depth:	395mm
Height:	450mm
Weight:	11.2kgs



Three person / Four person

Width:	2100mm / 2800mm
Depth:	395mm
Height:	450mm
Weight:	16.8kgs / 22.4kgs

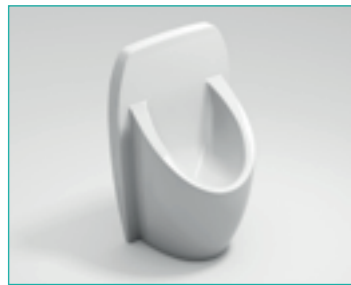
SINGLE URINALS

Sanquip GRP Single Urinals are ergonomically designed to suit almost all male washroom applications. Our Lingfield single urinal is ergonomically designed to suit almost all male washroom applications.

Our Lingfield single urinal is ergonomically designed to suit almost all male washroom applications.

Units are available in a wide range of colours from the RAL Colour System. Please confirm availability with EMJ.

Lingfield



Lingfield single urinal

Width:	390mm
Depth:	300mm
Height:	610mm
Weight:	3.9kgs

BESPOKE DESIGN

We pride ourselves on producing bespoke products to suit the clients individual requirements, whether it be shape, size, colour or any other preference. We also produce dividers for use between the single stalls if required.





SANQUIP

WATERLESS | DURABLE | BESPOKE

Head Office UK

Sanquip
EMJ Plastics Ltd
Clarence Drive
Filey
North Yorkshire
YO14 0AA

01723 512224
sales@emjplastics.com

sanquip.com